



SCALE: 1"=200'

**SAMUEL SWARTOUT SURVEY  
A-1022**

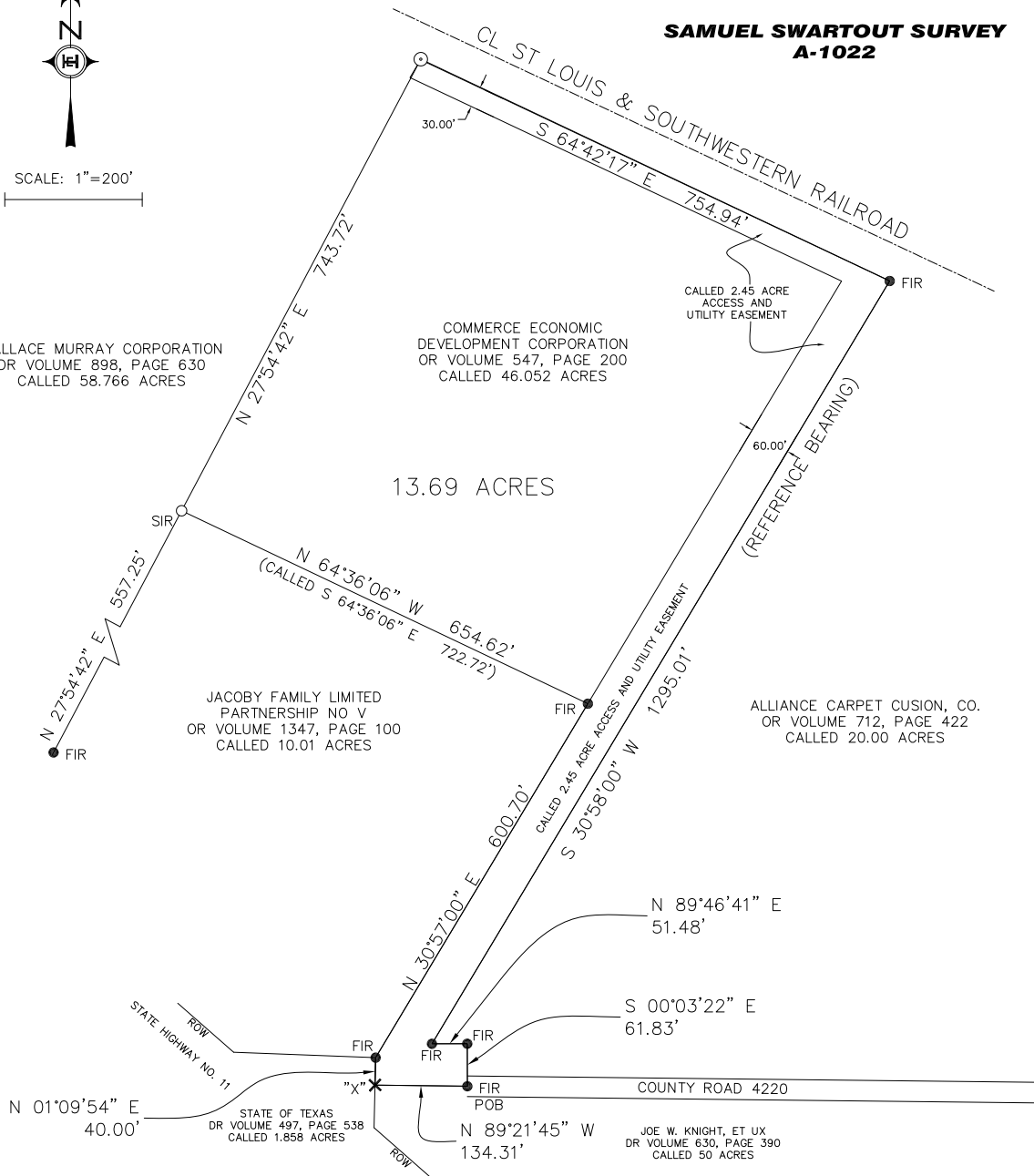
WALLACE MURRAY CORPORATION  
DR VOLUME 898, PAGE 630  
CALLED 58.766 ACRES

COMMERCE ECONOMIC  
DEVELOPMENT CORPORATION  
OR VOLUME 547, PAGE 200  
CALLED 46.052 ACRES

13.69 ACRES

JACOBY FAMILY LIMITED  
PARTNERSHIP NO V  
OR VOLUME 1347, PAGE 100  
CALLED 10.01 ACRES

ALLIANCE CARPET CUSION, CO.  
OR VOLUME 712, PAGE 422  
CALLED 20.00 ACRES



**COMMERCE ECONOMIC  
DEVELOPMENT CORPORATION  
CITY OF COMMERCE  
13.69 ACRES  
HUNT COUNTY, TEXAS  
FEBRUARY 2007**

LEGEND

- SIR SET IRON ROD
- FIR FOUND IRON ROD
- FIP 2" IRON PIPE FOUND
- ✕ "X" SHOULD NOT BE
- OR OFFICIAL PUBLIC RECORDS
- DR DEED RECORDS
- POB POINT OF BEGINNING

I, KEVIN K. WHITLEY, REGISTERED PROFESSIONAL LAND SURVEYOR FOR THE STATE OF TEXAS, RPLS #5892, DO HEREBY CERTIFY THAT THE PLAT SHOWN HEREIN REPRESENTS AN ACTUAL ON-THE-GROUND SURVEY CONDUCTED BY ME, COMPLETED ON FEBRUARY 1, 2007.

REGISTERED PROFESSIONAL LAND SURVEYOR



THIS PDF FILE IS AN ELECTRONIC VERSION OF THE ORIGINAL SIGNED AND SEALED PLAT AND SHOULD NOT BE RECORDED OR FILED WHAT SO EVER. A SIGNED AND SEALED ORIGINAL MAY BE OBTAINED FROM HAYTER ENGINEERING INC. BY CALLING (903) 785-0303.